

CLEANING, ELECTROPOLISHING
AND DARK MARKING

BYMAT®
BYMAT GmbH

ALL IN ONE UNIT



TECHNICAL DATA:

VOLTAGE:

PRIMARY: 230 VOLT, 50 Hz

SECONDARY: 24 VOLT, 12 AMPERE

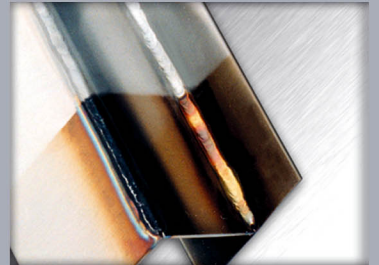
DIMENSIONS:

WIDTH x HEIGHT x DEPTH: 150 x 290 x 300 mm

THE BYMAT 1124 RE
INCL. SET

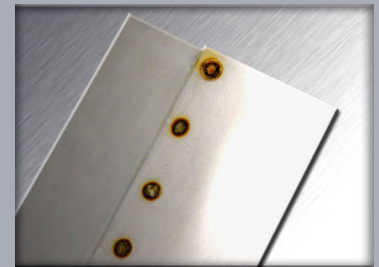
Cleaning

The BYMAT 1124 RS is an appliance for electrochemical cleaning of weld seams on VA steel. The fluid used is moreover completely safe and environment-friendly.



Electropolishing

Grey edges (heat-affected zones) can be straightforwardly removed. In this way high-grade steel can be polished to a high mirror finish.



Dark marking

Marks easily, quickly and inexpensively – jet black even on cylindrical components.



STAINLESS STEEL